

venuehirekit



Where your event comes alive

Bring your event to life at the National Museum of Australia

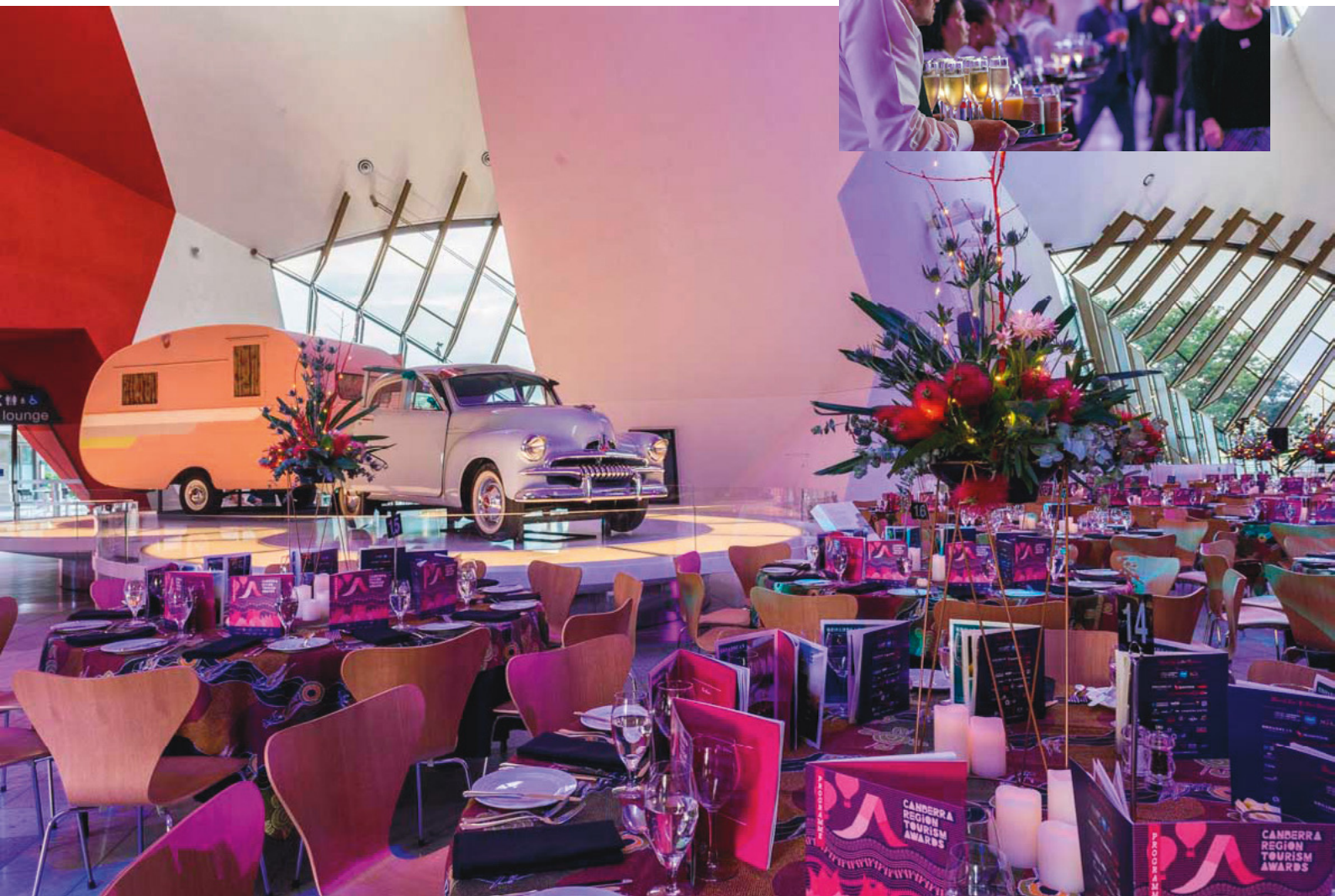


The National Museum of Australia is an architectural landmark in the heart of the national capital, Canberra. Located on the shores of Lake Burley Griffin with uninterrupted views, it is the most prestigious venue for your event.

Designed to include versatile function spaces, the Museum is the ideal location for weddings, corporate events and gala balls, and provides intimate spaces for lakeside dining and cocktail functions.

Imposing indoor and outdoor spaces with sweeping decks and expansive windows provide mountain, lakeside and city views, and a spectacular setting for any occasion.

The Gandel Atrium



The **Gandel Atrium** makes any event a memorable occasion. With soaring ceilings and expansive windows overlooking Lake Burley Griffin, this stunning architectural space is perfect for events large and small.

Your guests will be surrounded by objects from the Museum's collection including a Muttaborrasaurus skeleton and an iconic 1955 FJ Holden.

Additionally, you can use our outdoor deck to take full advantage of the breathtaking views.

Evening (from 6.30pm)	\$3,100
<hr/>	
Table setup	
Cocktail	1000 pax
Banquet	500 pax
Theatre	500 pax
<hr/>	
Area	1543 m ²

Included in the venue hire are:

- 1 x security guard
- 1 x cleaner
- lectern and microphone

The Bay Windows



The **Bay Windows** offer both dramatic architecture and intimacy within the larger Gandel Atrium.

Expansive curved windows and high ceilings provide a stunning backdrop as guests look over Lake Burley Griffin towards the city.

Access to the Lakeside Deck, with grassed gardens leading to the water's edge, can be arranged on request.

Evening (from 6.30pm) \$1,500

Table setup

Cocktail	150 pax
Banquet	90 pax
Cabaret	60 pax
Theatre	120 pax

Area 125 m²

Included in the venue hire are:

- 1 x security guard
- 1 x cleaner
- lectern and microphone

The Peninsula Room



Located right on the water's edge, the **Peninsula Room** is surrounded by windows that offer an abundance of natural light and views over Lake Burley Griffin. It is both a practical daytime venue and intimate evening event space.

At the rear of the room, guests look into the Museum's Garden of Australian Dreams. Guests also have exclusive use of a deck and undercover outdoor area, perfect for pre-dinner canapés or a conference breakout space.

Day (8am – 5pm)	\$1,350
Half day (4 hours)	\$850
Evening (from 5pm)	\$1,900
<hr/>	
Table setup	
Cocktail	250 pax
Banquet	190 pax
Cabaret	160 pax
Theatre	250 pax
<hr/>	
Area	389 m ²

Included in the day venue hire are:

- 2 x data projectors with screens
- lectern and microphone
- Bose PA sound system
- wifi internet connection

In addition to daytime hire inclusions, events after 5pm include:

- 1 x security guard
- 1 x cleaner

Additional charges will apply for AV, sound and lighting

Visions Theatre



Visions Theatre is a dedicated lecture theatre suitable for talks, presentations and film screenings for up to 174 people. The theatre is equipped with a hearing loop system to enhance accessibility for people with hearing impairments.

Access to the green room is available on request.

Full day (9am – 5pm)	\$2,000
Theatre	174 pax

Included in the venue hire are:

- data projector and screen
- lectern and microphone
- roving microphone
- complimentary use of a dedicated area to serve refreshments

Evening (from 5pm)	\$2,750
Theatre	174 pax

In addition to daytime hire inclusions, events after 5pm include:

- 1 x security guard
- 1 x cleaner

Additional charges will apply for AV, sound and lighting

GSL Gallery Mezzanine



The Museum’s newest event space offers an unrivalled guest experience. An open venue available for your exclusive use, the **GSL Gallery Mezzanine** overlooks Great Southern Land, the Museum’s environmental history gallery. Available as a breakout area, display space, cocktail lounge or dramatic dinner venue, guests will find themselves surrounded by objects and stories, making for a unique and memorable event.

Evening (from 6.30pm)	\$3,100
<hr/>	
Table setup	
Cocktail	180 pax
Banquet	180 pax
<hr/>	
Area	300 m ²

- Included in the venue hire are:
- 1 x security guard
 - 1 x cleaner

GSL Lakeside Landing



The **GSL Lakeside Landing** is a unique event space that complements the Mezzanine and Visions Theatre. With views that take in some of Canberra's key sights, this surprising venue can be used as a breakout space, a private dining area, or a space to serve refreshments for a special event or in conjunction with the use of the Visions Theatre or Gallery Mezzanine.

Day	\$700
Evening (from 6.30pm)	\$1,300
Table setup	
Long tables	40 pax
Banquet	40 pax
Cocktail	40 pax

Events after 5pm include:

- 1 x security guard
- 1 x cleaner

Additional charges will apply for AV, sound and lighting

Friends Lounge



The **Friends Lounge** is a modern, relaxing and intimate lakeside space for informal social gatherings and small networking events. Doors open to a deck and lead guests down to the shores of Lake Burley Griffin.

Evening	\$550
(from 6.30pm, only when booked with another space)	
Area	100 m ²

Amphitheatre and Lakeside Deck



This impressive outdoor venue space and deck area is situated right on the shores of Lake Burley Griffin and is the perfect setting for an event under the stars.

Evening (from 5pm)	Price on application
<hr/>	
Table setup	
Cocktail	1600 pax
Dinner	350 pax

Included in the venue hire are:

- 1 x security guard
- 1 x cleaner

Garden of Australian Dreams



At the heart of the Museum is the **Garden of Australian Dreams**, a symbolic landscape exploring ideas of place and country.

This outdoor area, with its water features, creative landscaping and lighting effects, is encircled by the Museum building, providing a magical setting for any evening event.

Evening Price on application
(from 6.30pm)

Table setup

Cocktail 1000 pax

Dinner 350 pax

Area 5500 m²

Included in the venue hire are:

- 1 x security guard
- 1 x cleaner

The Straw Deck



Our impressive **Straw Deck** event space is nestled outside the main entrance and connects with the Christina and Trevor Kennedy Garden. With a giant red straw as the focal point and views over the Garden of Australian Dreams, it offers a serene and inviting atmosphere.

This distinctive and private area can be used as a standalone space or be booked with another Museum venue.

Evening (from 6.30pm)	Price on application
<hr/>	
Table setup	
Cocktail	650 pax

The Forecourt



The **Museum Forecourt** is an open-air venue in front of the Museum's main entrance. Surrounded by the Christina and Trevor Kennedy Garden, it provides the perfect backdrop for casual events or performances.

Evening
(from 6.30pm)

Price on application

The Museum Cafe



The **Museum Cafe** offers sweeping views of the lake and is the perfect location for your next private dining event before or after hours. Venue hire includes access to our lakeside deck, which is equipped with outdoor heaters and a private balcony overlooking the peninsula, showcasing the best of what Canberra has to offer.

Price on application

Betty Caravan



Whatever the occasion, **Betty Caravan** will add a touch of nostalgia to your event. Available onsite, Betty will serve up champagne, cocktails, juice or coffee – or whatever else you ask of her!

Price on application

Exclusive catering



Broadbean Catering & Events is a sought-after caterer in Canberra with a reputation for delicious, locally sourced food and outstanding service.

Multi award-winner of ACT Wedding Caterer of the Year, ACT Venue Caterer and overall ACT Caterer of the Year, Broadbean has a proven track record of delivering to the highest standards.

Broadbean Catering creates menus reflective of the season and supports local farmers and suppliers, providing Museum guests with the best our region has to offer. They can tailor offerings to suit your particular event needs.

CONTACT
02 6208 5179
events@broadbeancatering.com.au
broadbeancatering.com.au



BROADBEAN
CATERING
& EVENTS

Unique corporate gifts



Gifts to complement a special event or occasion can be pre-purchased from the **Museum Shop**. Here you will find a variety of Australian-made corporate gifts and an exclusive range of National Museum products. Available instore or online at shop.nma.gov.au

After-hours access to the Museum Shop can be arranged on request.



Scan the QR code to access the Museum Corporate Gift Guide.



the
museum
shop

Gallery viewings and tours



A tour of our galleries will introduce your guests to fascinating objects and stories from Australia's history. A great way to break up planning days or corporate events, they can be conducted in a variety of languages and tailored to suit.

Exclusive after-hours exhibition viewings are also available. Please contact us to discuss your specific needs.

The Museum has two firestones where people can gather, connect and share stories. They are available should you wish to conduct a smoking ceremony or Welcome to Country.

Further information on the ACT Government's First Nations protocols is available on the [ACT Government website](#).





Location

The National Museum of Australia is located on Lawson Crescent, Acton Peninsula, Canberra. The Museum is just a short car ride from the city centre.

Audio, staging and lighting

Our technicians will work with you to create an audiovisual package to meet your needs. A price for this component will be provided in your written quote.

Security

Events held outside of business hours may require one or more security guards. High-risk events may require a higher ratio of guards to guests. This is at the Museum's discretion. A price for security will be provided in your written quote.

Cleaning

Some events may require additional cleaning services. A price for cleaning will be provided in your written quote.

Accessibility

The Museum has the ACT's first Changing Places change room, with a fully accessible public toilet, adult change table and hoist.

A hearing loop is installed in the Visions Theatre and the Peninsula Room, and wheelchairs and motorised scooters are available for use.

Parking

A short and long stay car park is located at the Museum. Parking is free after hours and on weekends and public holidays.

Disabled parking facilities are available close to the main entrance.

A bus and coach parking area is located close to the main entrance.

Taxi

A dedicated taxi drop-off and pick-up point is located close to the main entrance. A staff member can arrange for taxis to collect your guests after your event, on request.

Accommodation

With plenty of accommodation options located close by in NewActon and Canberra City, your guests won't need to travel far.

Contact us

venuehire@nma.gov.au
T 02 6208 5179

Full terms and conditions are available on the [Museum website](#).

nma.gov.au