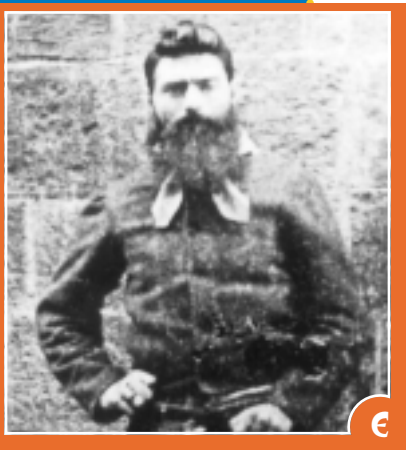
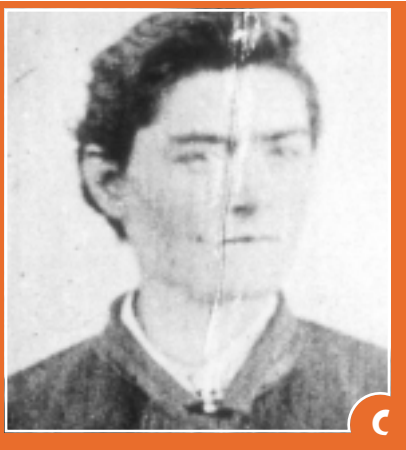
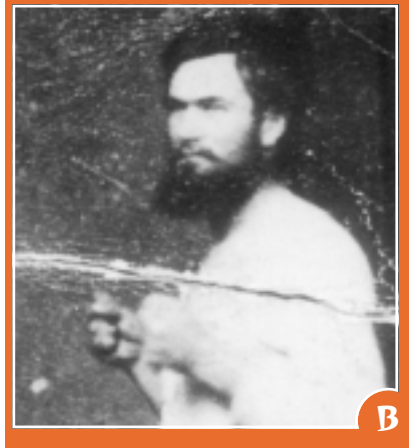
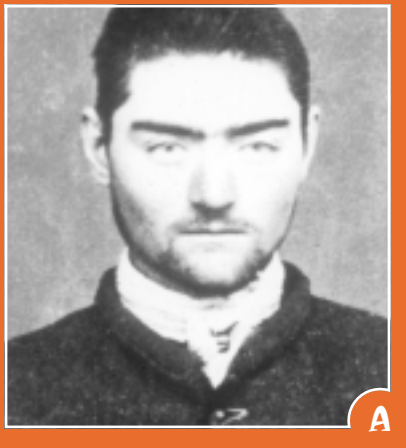


In search of Ned Kelly through...

Historical photos



Here are a number of historical photographs of Ned Kelly.



A Public Records Office, Victoria B Courtesy I. Jones, in Keith McMenomy, *Ned Kelly*, Hardie Grant Books, 2001
C Public Records Office, Victoria D Reproduced with permission of the Lloyd family, in Keith McMenomy, *Ned Kelly*, Hardie Grant Books, 2001 E Courtesy I. Jones, in Keith McMenomy, *Ned Kelly*, Hardie Grant Books, 2001
F La Trobe Pictorial Collection, State Library of Victoria

- 1 Put these photographs into what you think is the correct chronological order. (You can check your answer later by looking at page 46.)
- 2 In a group, have each member select a different photograph. Describe the qualities or characteristics that you see there. Compare your descriptions. What do you think are the strengths and weaknesses of this type of character description from photographs?
- 3 At least one of the photographs has been 'touched up'. Suggest why. (You can check your answer on page 46.)
- 4 It is common now for images to be digitally altered. What problems does this create for people studying the past?
- 5 a If you were selecting one of these photographs to illustrate a book suggesting that Ned was a villain – which one would you choose?
b If the book were one praising Ned – which one would you choose?
c If the book were one adopting a neutral point of view – which one would you choose?
- 6 One of these photographs has recently been discovered not to show Ned Kelly. See if you can decide which. Give your reasons. (You can check your answer later by looking at page 46.)
- 7 If you ONLY had these photographs as evidence of the life and character of Ned Kelly, what could you say about him?











