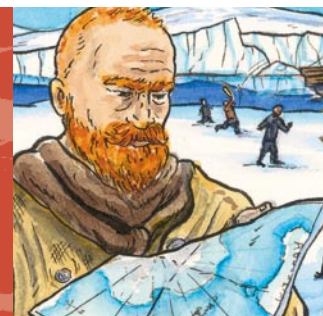


Antarctica then and now



Antarctica is the coldest continent on earth so people who live there face many challenges.

However, there are many differences between life for the members of Mawson's 1911 expedition and the living conditions at Australia's Antarctic bases today.

Use information from *Antarctic Close-up* and your own research to complete the following chart. You may use illustrations and/or words.



	Then	Now
Food		
Clothing		
Communication		
Housing		
Transport		
Work e.g. experiments		

