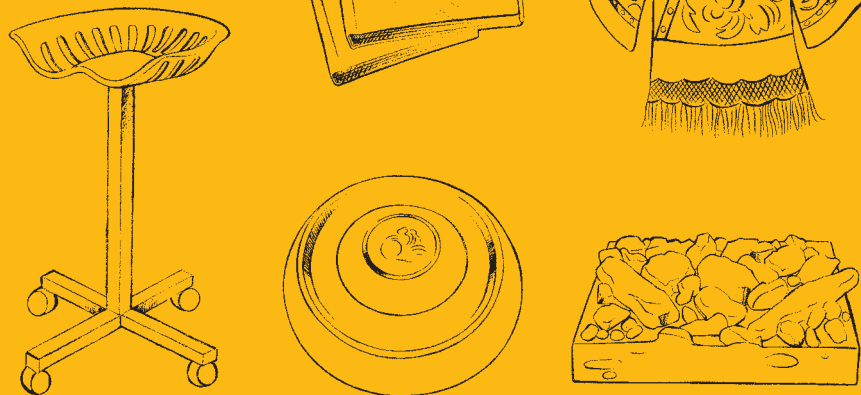
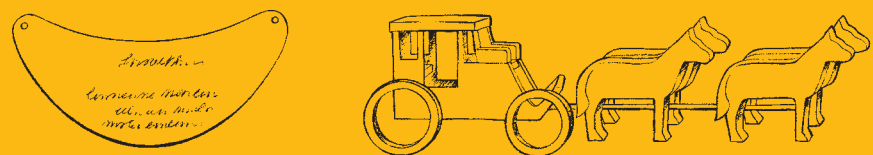


Touch, draw,  
find out  
some more!



Let's  
explore  
Landmarks!



## Start exploring here!

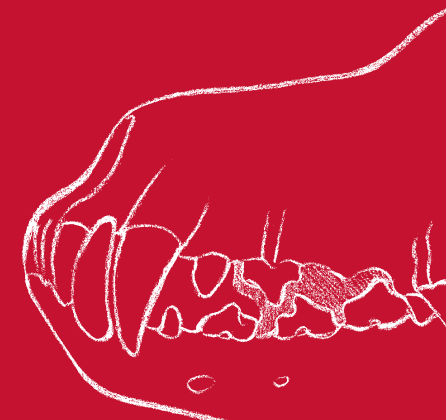
Landmarks is a gallery about people, places, animals and interesting things across Australia.

Look inside the cupboards and take out some things you like.

You can draw or write about them in this book.

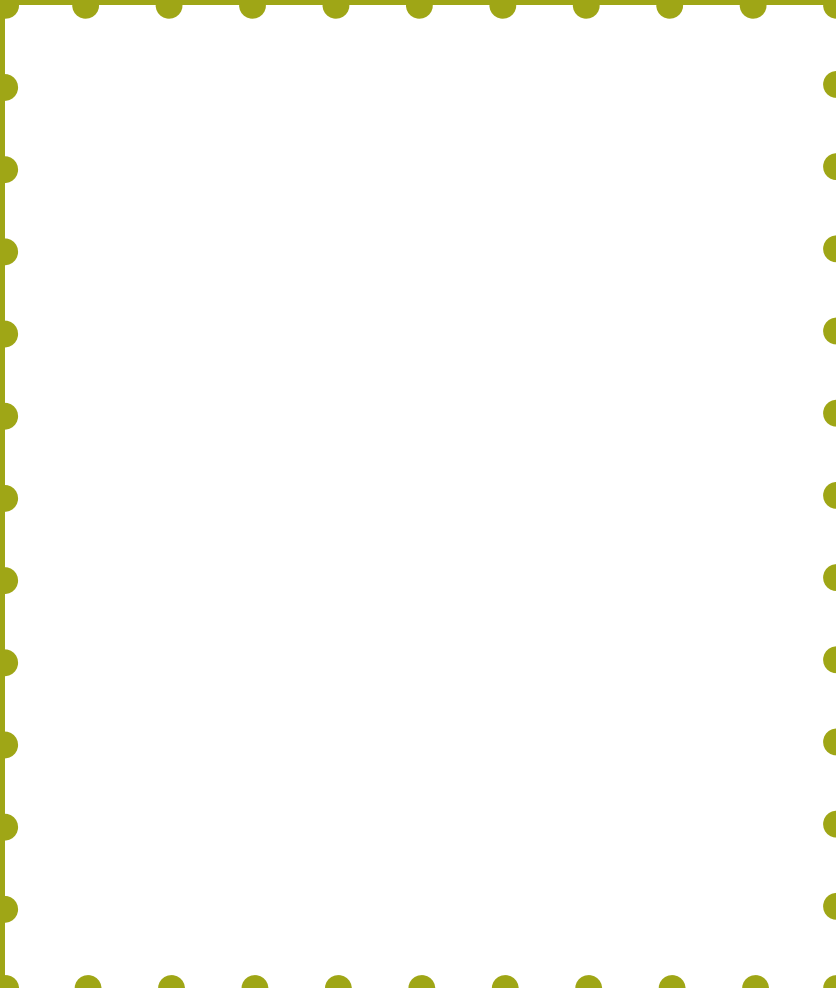
Don't forget to put them back!

Then explore the gallery to find stories about all these things and more!



# Can you find ... an animal?

Draw it or write about it on these pages.



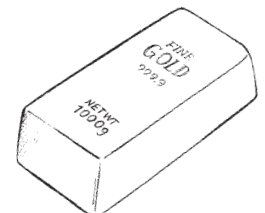
What is it?

Where did it live?

Who did it live with?

Can you find any more animals  
in this gallery?

Which one is an animal? Circle your choice!

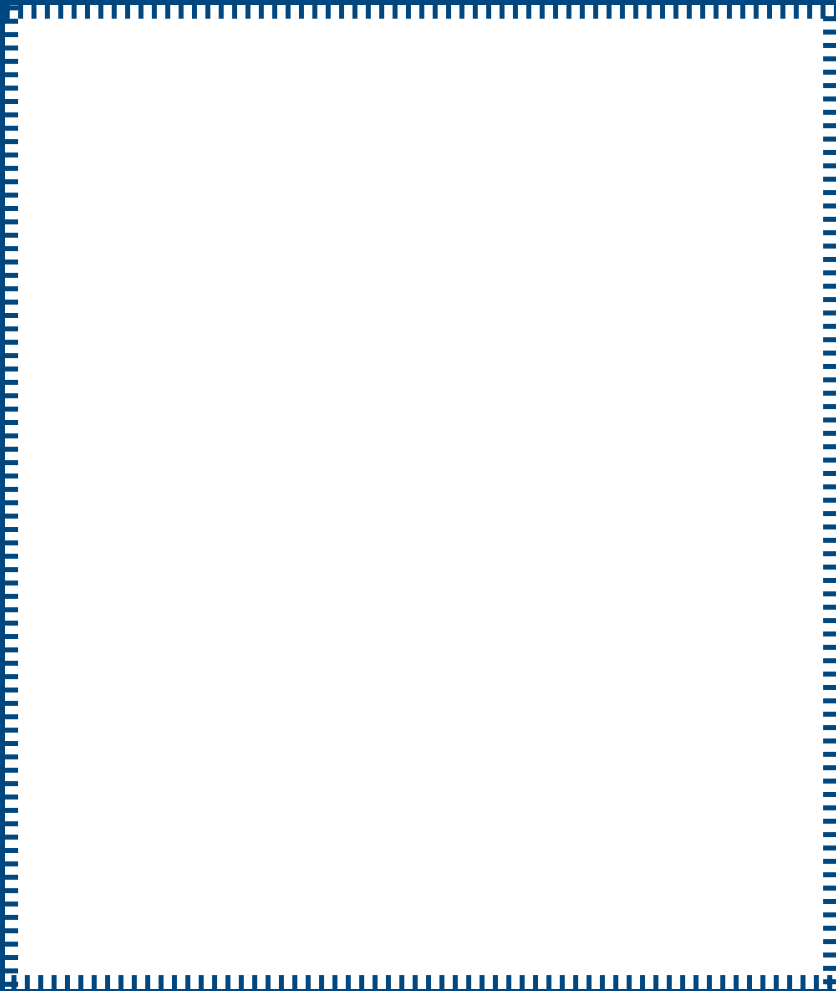


## Did you know?

Coaches were usually pulled by teams of four or five horses, and could travel about 80 kilometres each day. The horses were changed every 15–30 kilometres.

# Can you find ... something metal?

Draw it or describe it on these pages.



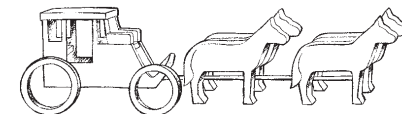
What is it?

Where was it used?

Who used it?

How many more metal things can you find in this gallery?

Which one is metal? Circle your choice!



## Did you know?

Australian money changed to dollars and cents in 1966. Before that Australian money was based on the British sterling system: pounds, crowns, florins, shillings, sixpences, threepences, pennies and halfpennies.

# Can you find these places?

Find the hidden names of these Australian places and circle them: Keith, Hobart, Perth, Robe and Sydney.

A Y D H A T  
P E R T H R  
T N O I Y A  
N D B E A B  
U Y E K L O  
F S K I P H

Can you find stories about these places in this gallery?

# Match them up!

Draw a line from each object to the place it came from.



Wool



Pieces of iron ore

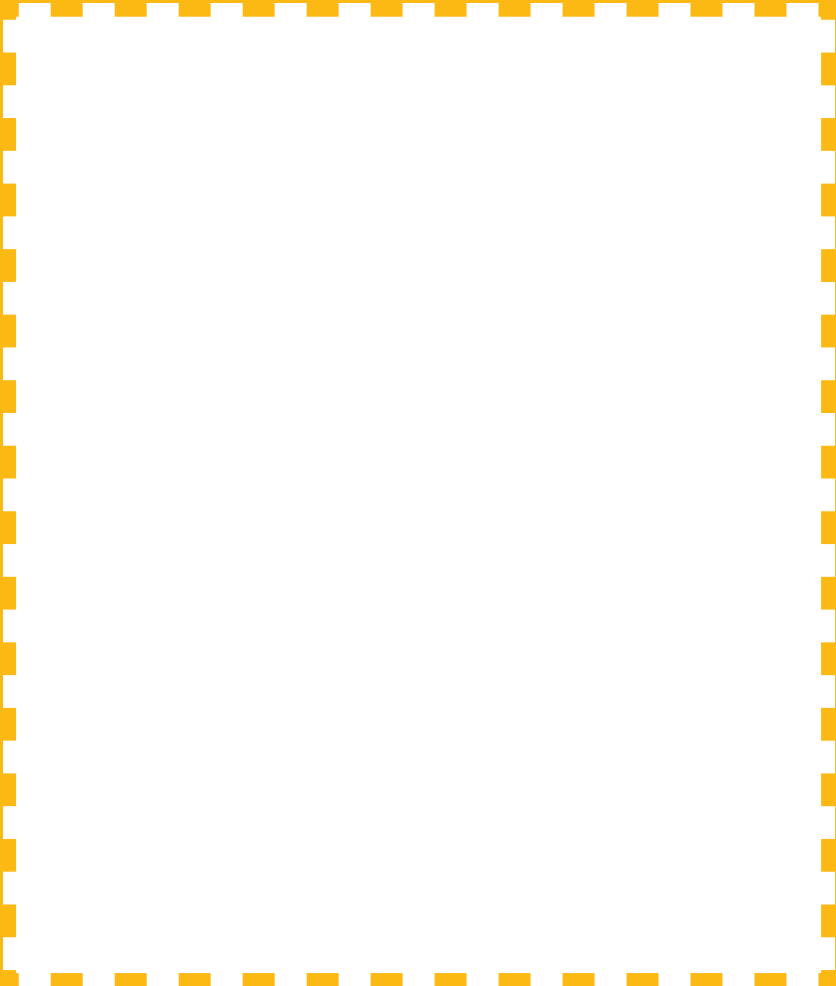


Holden hub cap



# Can you find ... something plastic?

Draw it or write about it on these pages.



## Did you know?

An adult needs to drink about 1.5–2 litres of water each day, and can only survive a few days without water.

What is it?

Where was it used?

Who used it?

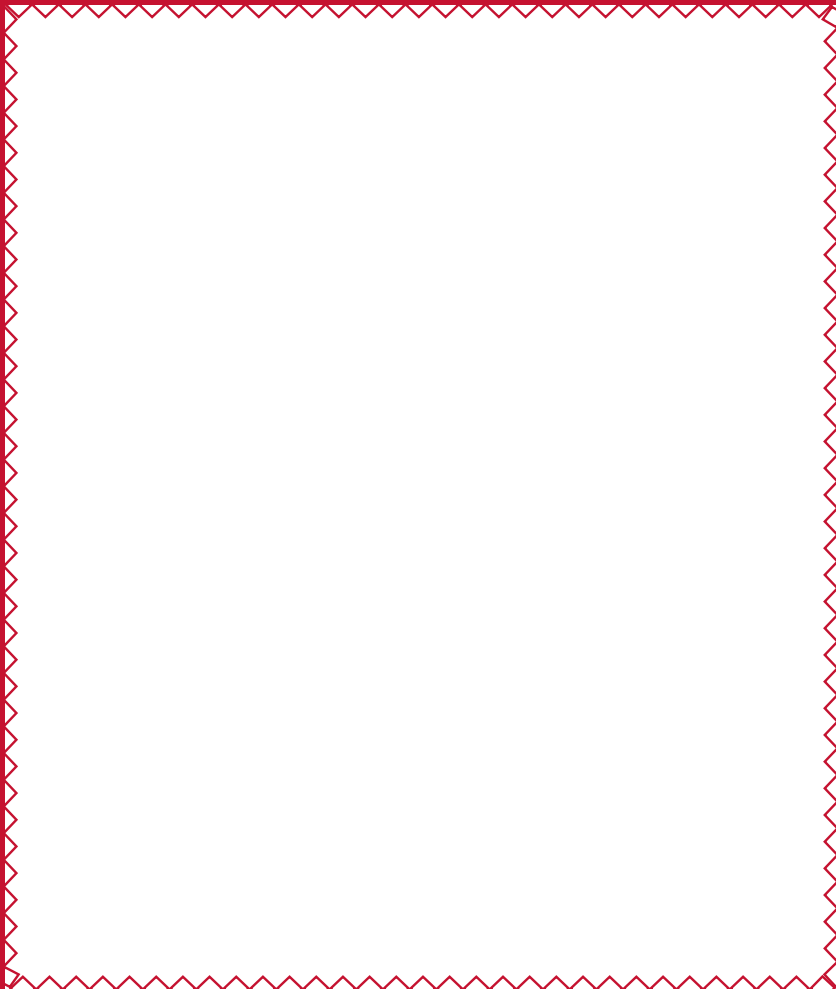
Can you find anything else made of plastic in this gallery?

Which one is plastic? Circle your choice!



# Can you find ... something to wear?

Draw it or describe it on these pages.



What is it?



Where would you wear it?

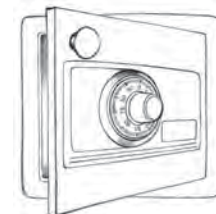


Who wore it?



How many more pieces of clothing can  
you find in this gallery?

Which one is clothing? Circle your choice!



Did you know?

An adult merino sheep is usually shorn once a year, with a shearer taking about 3 minutes to shear a sheep. Depending on the breed, a sheep can produce enough wool to make six jumpers!

# X marks the spot!

Mark the places you visit in Landmarks on this map ...



... and send a postcard of your favourite place.  
You'll find them and a postbox at the end of this gallery!

