

WHAT KIND OF ANIMAL AM I?

KSPACEnational
museum
australia

Green turtle

Photograph by Brocken Inaglory, Wikimedia Commons

QUESTIONS

Cut and paste your answers,
or write your own, in the space below:

- 1 Do I live in water, on land, or in the air?
- 2 Am I a mammal, reptile or bird?

What do I eat? Am I:

- 3
 - a herbivore (plants only);
 - an omnivore (plants and meat); or
 - a carnivore (meat only)?



WHAT KIND OF ANIMAL AM I?

KSPACE

**national
museum
australia**



Frill-necked lizard
Photograph by Matt, Wikimedia Commons

QUESTIONS

Cut and paste your answers,
or write your own, in the space below:

- 1 Do I live in water, on land,
or in the air?
- 2 Am I a mammal, reptile or bird?
- 3 What do I eat? Am I:
 - a herbivore (plants only);
 - an omnivore (plants and meat); or
 - a carnivore (meat only)?



WHAT KIND OF ANIMAL AM I?

KSPACEnational
museum
australia

Flying fox

Photograph by Daniel Vianna, Wikimedia Commons

QUESTIONS

Cut and paste your answers,
or write your own, in the space below:

- 1 Do I live in water, on land, or in the air?
- 2 Am I a mammal, reptile or bird?

What do I eat? Am I:

- 3
 - a herbivore (plants only);
 - an omnivore (plants and meat); or
 - a carnivore (meat only)?



WHAT KIND OF ANIMAL AM I?

KSPACEnational
museum
australia

Male walrus

Photograph by Hickey Bill, US Fish and Wildlife Service via Wikimedia Commons

QUESTIONS

Cut and paste your answers,
or write your own, in the space below:

- 1 Do I live in water, on land, or in the air?
- 2 Am I a mammal, reptile or bird?

What do I eat? Am I:

- 3
 - a herbivore (plants only);
 - an omnivore (plants and meat); or
 - a carnivore (meat only)?



WHAT KIND OF ANIMAL AM I?

KSPACEnational
museum
australia

Owl
Photograph by Kristina Servant, Wikimedia Commons

QUESTIONS

Cut and paste your answers,
or write your own, in the space below:

- 1 Do I live in water, on land, or in the air?
- 2 Am I a mammal, reptile or bird?

What do I eat? Am I:

- 3
 - a herbivore (plants only);
 - an omnivore (plants and meat); or
 - a carnivore (meat only)?



WHAT KIND OF ANIMAL AM I?

KSPACEnational
museum
australia

Emperor Penguin

Photograph by Christopher Michel, Wikimedia Commons

QUESTIONS

Cut and paste your answers,
or write your own, in the space below:

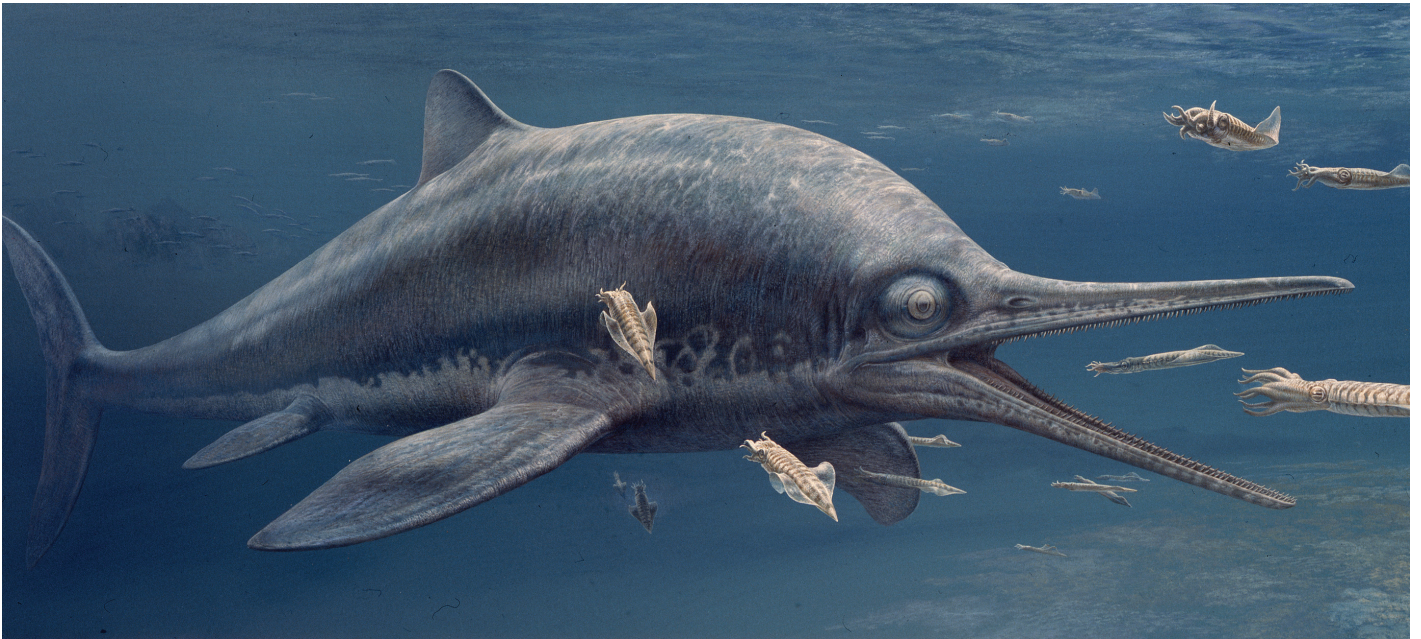
- 1 Do I live in water, on land, or in the air?
- 2 Am I a mammal, reptile or bird?

What do I eat? Am I:

- 3
 - a herbivore (plants only);
 - an omnivore (plants and meat); or
 - a carnivore (meat only)?



WHAT KIND OF ANIMAL AM I?

KSPACEnational
museum
australia

Ichthyosaur
By John Sibbick

QUESTIONS

Cut and paste your answers,
or write your own, in the space below:

- 1 Do I live in water, on land, or in the air?
- 2 Am I a mammal, reptile or bird?

What do I eat? Am I:

- 3
 - a herbivore (plants only);
 - an omnivore (plants and meat); or
 - a carnivore (meat only)?



WHAT KIND OF ANIMAL AM I?

KSPACEnational
museum
australia

Lion
Photograph by Yathin S. Krishnappa, Wikimedia Commons

QUESTIONS

Cut and paste your answers,
or write your own, in the space below:

- 1 Do I live in water, on land, or in the air?
- 2 Am I a mammal, reptile or bird?

What do I eat? Am I:

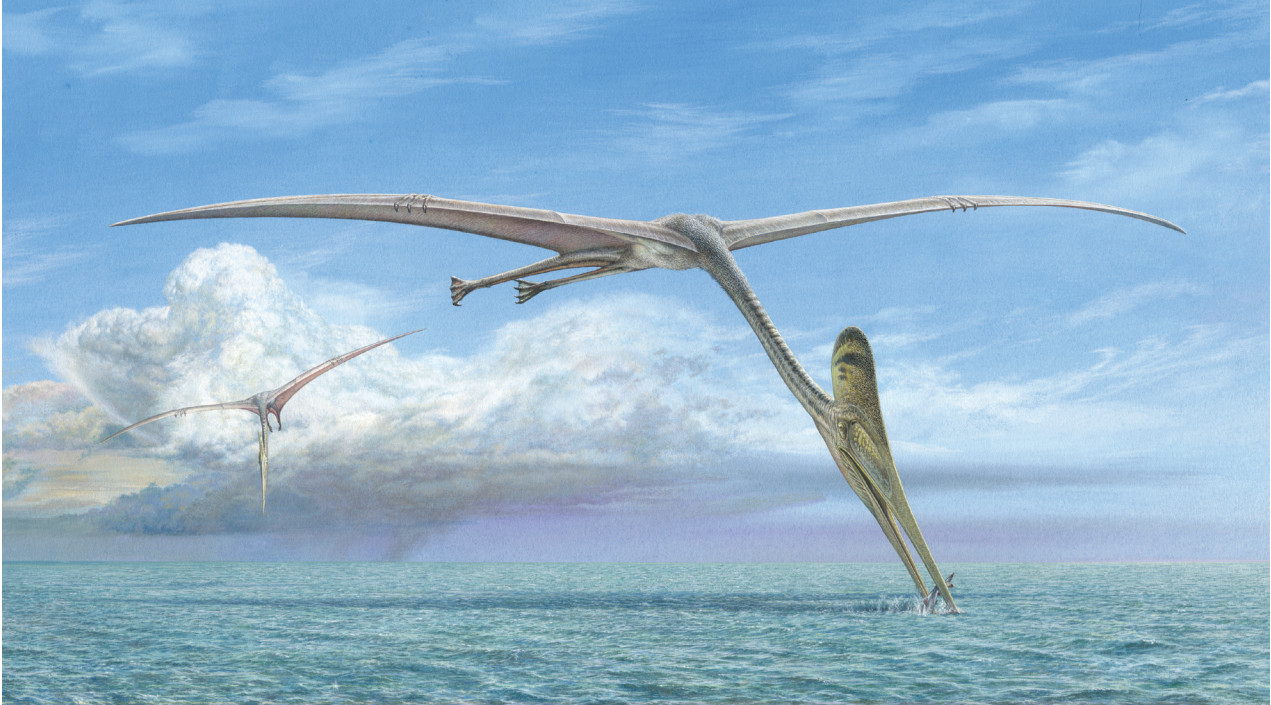
- 3
 - a herbivore (plants only);
 - an omnivore (plants and meat); or
 - a carnivore (meat only)?



WHAT KIND OF ANIMAL AM I?

KSPACE

national
museum
australia



Pterosaur
By John Sibbick

QUESTIONS

Cut and paste your answers,
or write your own, in the space below:

- 1 Do I live in water, on land, or in the air?
- 2 Am I a mammal, reptile or bird?

What do I eat? Am I:

- 3
 - a herbivore (plants only);
 - an omnivore (plants and meat); or
 - a carnivore (meat only)?



WHAT KIND OF ANIMAL AM I?

KSPACEnational
museum
australia

Ostrich
Photograph by Chad Rosenthal, Wikimedia Commons

QUESTIONS

Cut and paste your answers,
or write your own, in the space below:

- 1 Do I live in water, on land, or in the air?
- 2 Am I a mammal, reptile or bird?

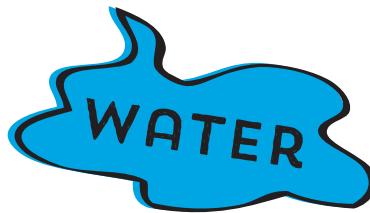
What do I eat? Am I:

- 3
 - a herbivore (plants only);
 - an omnivore (plants and meat); or
 - a carnivore (meat only)?



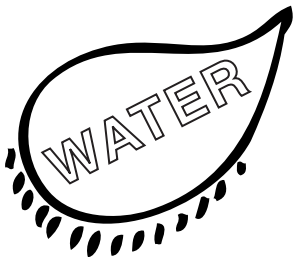
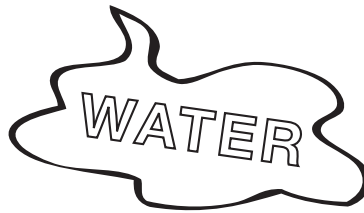
WHERE DO I LIVE?

Cut out the words below:



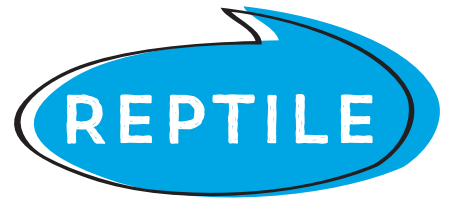
WHERE DO I LIVE?

Colour and cut out the words below:



AM I A REPTILE, MAMMAL OR BIRD?

Cut out the words below:



AM I A REPTILE, MAMMAL OR BIRD?

Colour and cut out the words below:



WHAT DO I EAT?

AM I A HERBIVORE,
CARNIVORE OR OMNIVORE?



Cut out the words below:



WHAT DO I EAT?

AM I A HERBIVORE,
CARNIVORE OR OMNIVORE?



Colour and cut out the words below:



TEACHER INFORMATION SHEET



Background

Kspace takes visitors to the Australia of 110 million years ago. During the Cretaceous period, Australia contained a vast inland sea and was home to dinosaurs, pterosaurs and giant marine reptiles.

Pterosaurs are flying reptiles. The idea of such creatures seems strange to us today, but animals are continuously evolving to fill new niches and dying out as circumstances change.

Instructions for teachers

This exercise sheet explores the variety of ways in which groups of related animals have evolved to survive in different environments.

Students can work together or by themselves to cut and paste the words from the answer sheets, or they can write their answers to the questions in the spaces provided.

Answers

ANIMAL	ANSWERS
1. Green turtle	Water, reptile, herbivore and/or omnivore
2. Frill-necked lizard	Land, reptile, carnivore
3. Flying fox	Air, mammal, herbivore
4. Walrus	Water, mammal, carnivore
5. Owl	Air, bird, carnivore
6. Penguin	Water, bird, carnivore
7. Ichthyosaur	Water, reptile, carnivore
8. Lion	Land, mammal, carnivore
9. Pterosaur	Air, reptile, carnivore
10. Ostrich	Land, bird, herbivore and/or omnivore